



## TECHNICAL RIDER

Version October 17, 2024

### ***NOS MATINS INTERIEURS***

Collectif Petit Travers – Quatuor Debussy

Length : 1h

From 7 yo

Teaser : <https://vimeo.com/754232800>

#### **CONTACTS :**

##### **Technical director - tour preparation :**

Thibault THELLEIRE – t.thelleire@collectifpetittravers.org - +33 6 85 78 57 71

##### **Stage and light managers, alternating :**

François DAREYS - f.dareys@gmail.com - +33 6 30 09 25 95

Thibault THELLEIRE – t.thelleire@collectifpetittravers.org - +33 6 85 78 57 71

##### **Sound engineers, alternating :**

Victor PAGE - victor.page@hotmail.fr - +33 6 28 63 41 40

Eric DUTRIEVOZ - dutrievoz.eric@neuf.fr - +33 6 12 70 32 50

This technical rider is an undivided part of the selling contract

The technical set up (sound / lights / stage...) is under the responsibility of the Presenter. Everything will have to be functional at the beginning of the set up. Every question about technical specificities have to be discussed as soon as possible in order to find, together, the best solutions.

Thank you for providing the technical rider and the DWG plots of your venue in order to prepare an adapted plot.

## **CREW ON TOUR :**

The technical crew of the company on tour is a light operator and a sound engineer. They'll be in charge of supervising the local crew for the set up and the strike out.

NB : As no stage manager is touring, they'll both take that position and will, if necessary, reconsider every decision taken during the preparation.

The artistic crew is composed of 10 jugglers and 4 musicians

Also on tour, one director and one production manager

## STAGE :

### Room

To allow some artistic visual effects, the show needs a deep blackout in the room and a total blackout on stage. Too bright emergency exit lights on stage might make impossible some artistic images.

The sound board must be centered and in the room. No closed booth will be accepted.

**The show has been created to be set on a totally flat stage of the following minimum dimensions**

- From wall to wall : 18m
- Opening of the frame : minimum 12m / maximum 14m
- Depth from the frame to the backdrop : 10m
- Admitted rake : 0%
- Height under battens : 8m

**The stage will be equipped as follow :**

- Dark, even and smooth floor (we set a linoleum)
- 5 sets of legs with the first one at the frame
  - Opening of 12m between the legs
  - Width of the legs 2,5m (3m if the audience is closer than 3m from the frame)
  - German masking around the stage
  - In case the legs are too wide, the overlap will be on the wing side of the batten
- 1 black backdrop
- 5 borders (bottom of the borders 7m from stage floor)
- A main curtain will be useful
- Lights on battens : around 8,5m from the stage floor

*These requests might be adapted to the specifications of each theater with the agreement of the company's technical director and / or the tour managers.*

## **SCENOGRAPHY :**

### **Our scenography is composed of :**

- A black linoleum 14m wide by 10m deep, 2mm thick (if the light focus is done with a heavy lift, the linoleum will be set afterwards) on which are moved 28 cubes of 60cm sides (steel frame with teflon pads covered with stretched fabric and a painted wooden panel side).

### **- The Presenter will provide :**

- Black dance floor vinyl tape rolls for the linoleum.
- 30kg of iron stage weights for each of the 10 light booms provided by the company.
- 10 kg of iron stage weights for each of the 2 wooden pin rails provided by the company.

## LIGHTS :

A lot of the visual effects of appearance / disappearance in the show are related to the fact that the light instruments are clean and functional.

### Provided by the company :

- 10 lighting booms
- 8 cubes floor bases

### The Presenter must provide :

- One digital lighting board with 2 crossfades, 1 page of 10 submasters (congo / Eos / Liberty).

2	5 kW Fresnel (1 with barn doors)	10	Asymetrical flood lamp 1 kW
18	PC 2 kW (clear or pebble lens)	17	PAR 64 CP62 (MFL)
22	PC 1 kW (clear lens)	11	PAR 64 CP61 (NSP)
1	PC 1 kW no lens	6	instruments 2 Kw in FOH for the bows
11	Profiles 1 kW 15°/40°		
1	Profile 1 kW 25°/50°		
4	Profiles 2 kW 25°/50°		

- Side and backstage lights with filter (blue L200 or similar), patched in 201
- House lights dimmable from the booth

### Filters list :

	L025	L027	L151	L156	L228	L709	R114	R132
PC 1 kW	6			10	6			
PC 2 kW		1				3	14	
PAR 64			1			6		
Flood lamp				8				
FOH « bows »								Depends on instruments

## SOUND :

### Main :

- PA adapted to the venue type L-Acoustics, D&B, Meyer, Adamson, with subs and central cluster
- Front fill and speakers in the room (if necessary)

### Monitors :

- 4 monitors type 15xt on the sides, on 2,5m stands, in the four corners of the stage (positions adapted to the available space on stage).
- 2 monitors type 15xt on batten (see position on the plot).
- We need an individual line for each monitor (x6).

### Microphones :

#### ***Provided by the quartet :***

- o 4 channel wireless system pocket
  - o 4 DPA 4061-OC-C-B00 (**low sensibility**) BLACK
  - o 3 Dead cat - BLACK
  - o 4 DPA MHS6005 for Violin
- 150 € (excluding taxes) will be billed as maintenance fees for one performance and 100€ (excluding taxes) per performance for at least 2 performances.

**Sound board :**

- The sound board has to be in the room, centered.
- 1 digital sound board QL1 / M32 or equivalent (if you only have an analogue board, thank you to contact the sound engineer of the company).
- 1 Shure SM58 or equivalent for talkback.
- 1 computer for the soundtrack provided by the company.
- We need 2 DI (or 1 stereo DI) for the computer.

**Intercoms :**

- 3 intercoms : 1 on stage, 1 for the light manager, 1 for the sound engineer.

**Miscellaneous :**

- 1 chair without arms, in the stage right wing.
- 1 small table for props, in the stage right wing.

**STUDIO :**

Depending on the schedule, Quatuor Debussy will need a rehearsal studio.

## **COSTUMES :**

We need a dresser who will take care of the costumes (washing, drying, ironing). Some mending work might have to be done too.

**THANK YOU FOR GIVING THESE CLEANING INSTRUCTIONS TO YOUR DRESSER ALONG WITH THE COSTUMES RIDER DESCRIBING THE MAINTENANCE OF EACH COSTUME.**

### **JUGGLERS COSTUMES (10 SETS) :**

Most of the jugglers costumes are dyed with chemical dyes. You must, as much as possible, favour vodka spraying for the cleaning and avoid washing machine. The colors have been fixed but some clothes are still bleeding color so you'll have to use dye-trapping sheets for every laundry to avoid incidents. Mostly blue costumes should be washed separately from mostly brown costumes. Ideally, an empty rinsing cycle should be done after every laundry to get rid of the dye inside the washing machine.

Only the elements that really need a cleaning should be washed. Ideally, just the tee-shirts, and shirts if necessary. Use a 30°C max quick cycle (between 15 and 30 minutes, depending on the washing machine)

**DO NOT SUNDRY THE COSTUMES, IT FADES THE COLORS**

For jackets, cardigans, sweaters... vodka + water spraying. For trousers, vodka + water spraying if it's enough. Otherwise, a 20° max quick cycle.

All the clothes are mostly made of natural fibers. Shirts and creased trousers require a quick ironing.

### **MUSICIANS COSTUMES (4 SETS) :**

Musicians costumes are not dyed, except for Christophe and Emmanuel's shirts (dyed grey). Be careful not to mix the musicians costumes with the jugglers costumes for the laundries. Start by washing the musicians costumes before the jugglers costumes to avoid the dye leftovers to stain them. Musicians and jugglers socks can be washed at the same time.



## **CLEANING SUM UP :**

Washing machine #1 (after each performance if possible) : tee-shirt (musicians and jugglers), shirts (musicians) and socks (musicians and jugglers) 30°C max quick cycle.

Washing machine #2 (Only if necessary, as rarely as possible) : shirts + brown tee-shirts (jugglers) 30°C max quick cycle.

Washing machine #3 (Only if necessary, as rarely as possible) : shirts + blue tee-shirts (jugglers) 30°C max quick cycle.

Vests, jackets and trousers + shirts and jugglers tee-shirts (if not washed in machine) vodka + water spraying

Iron for shirts and trousers + crumpled costumes.

**ESTIMATED TIME WITH ONLY ONE WASHING MACHINE : 4H**

## **DRESSING ROOMS & CATERING**

Quantity of dressing rooms :

- 2 dressing rooms for men (7 people)
- 1 dressing room for women (3 people)
- 1 to 2 dressing rooms for the quartet
- 1 dressing room for the technical crew
- 1 dressing room for production.

Thanks to have catering available in the dressing rooms or in the green room for rehearsal and performance days. Catering being composed of : dry fruits, bananas, rye or cereal bread, granola bars, cookies, Mars and Kit-Kat bars, tea, coffee, Coca-Cola and water fountains to fill up bottles.

**SCHEDULE :****GENERIC SCHEDULE - PERFORMANCE AT 8PM****D-2 - Pre rigging mandatory:**

- Black box (legs / backdrop / borders)
- Rigged lights + set dimmer lines on the floor + patch
- Rigged speakers on fly bars + on stands

**D-1 – Set up :**

2PM – 6PM	1 Technical director 1 Flyman 2 Carpenters 1 Sound engineer 1 Lighting supervisor 4 Electricians 1 Dresser	<ul style="list-style-type: none"> <li>- Unload truck</li> <li>- Sound set up</li> <li>- Light on booms set up</li> <li>- Overhead lights focus</li> <li>- Costumes cleaning (washing )</li> </ul>
6PM – 10PM	1 Technical director 1 Flyman 2 Carpenter 1 Sound engineer 1 Lighting supervisor 4 Electricians	<ul style="list-style-type: none"> <li>- End of overhead lights focus</li> <li>- Set linoleum</li> <li>- Sound levels</li> <li>- End of lights on booms set up + patch</li> <li>- Lights on booms focus</li> </ul>

**D day :**

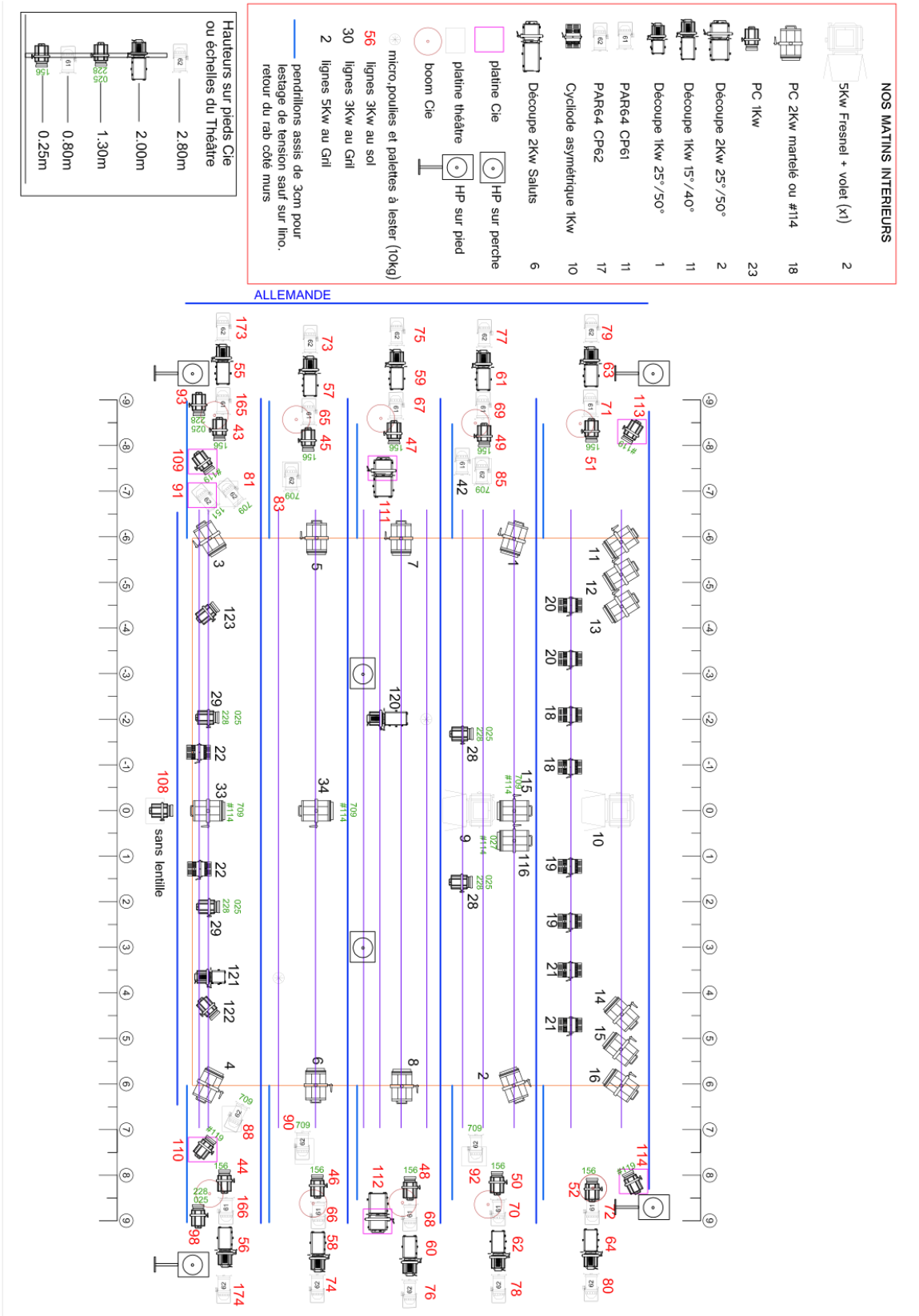
9AM-1PM	1 Technical director 1 Carpenter 1 Lighting supervisor 1 Electrician	<ul style="list-style-type: none"> <li>- End of lights on boom focus</li> <li>- Light levels</li> <li>- Wings marking / Legs tidying</li> <li>- Cleaning stage</li> </ul>
2PM - 7PM	1 Dresser 1 Lighting supervisor 1 Electrician 1 Head carpenter 1 Flyman 1 Sound engineer	<ul style="list-style-type: none"> <li>- Costumes cleaning (ironing)</li> <li>- End of light levels</li> <li>- End of sound levels</li> <li>- Sound check with the Quartet</li> <li>- Stage cleaning</li> </ul>
7PM -9:30PM	1 Technical director 1 lighting supervisor 1 Sound engineer	<ul style="list-style-type: none"> <li>- 7PM Warm up</li> <li>- 8PM-9PM Performance</li> </ul>

<b>IF SHOW ON THE NEXT DAY</b> 9:30PM–10PM		- Offset stage
<b>STRIKE</b> 9:30PM-00AM	1 Dresser 1 Technical director 1 Flyman 2 Carpenters 1 Lighting supervisor 3 Electrician	- Costumes cleaning - Linoleum rolling - Strike lighting booms + mics - Load truck

**In case of a second performance on D+1 and more :**

9AM-1PM	1 Dresser	- Costumes cleaning
2PM-6PM	1 Dresser 1 Technical director 1 Lighting supervisor 1 Sound engineer	- Costumes cleaning - Notes / Rehearsal
7PM-9:30PM	1 Technical director 1 Lighting supervisor 1 Sound engineer	- 7PM Warm up - 8PM-9:30PM Performance

# Generic plot



Side view plot

